

General Information

Date

November 10 (Sat) - November 11 (Sun), 2018

Venue

International University of Health and Welfare Narita Campus
4-3 Kozunomori, Narita-shi, Chiba 286-8686

Registration

All participants should register at the registration desk on the second floor of the venue.

- Registration Hours
Day 1: November 10 (Sat) 8:00 - 18:00
Day 2: November 11 (Sun) 7:30 - 17:00
- Advance Online Registration
Please bring the print-out of your exchange ticket e-mail with you to the conference. The name badge and the abstract book will be provided at the registration desk during the conference.

Congress Dinner

Date: November 10 (Sat) 19:00–22:00

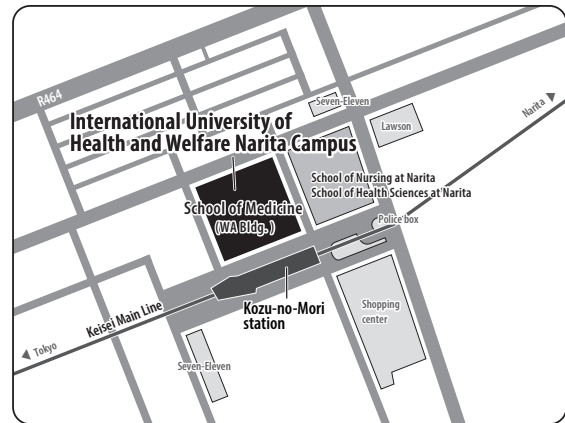
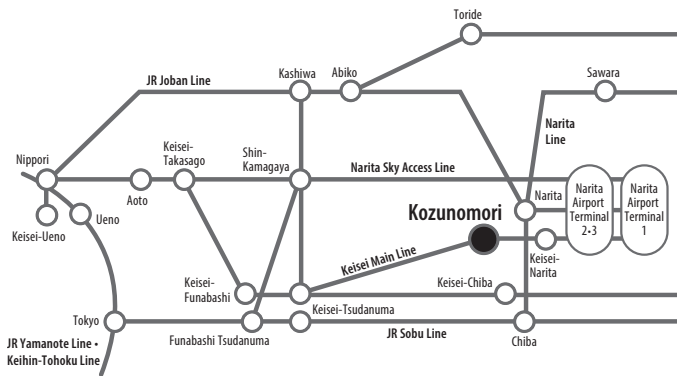
Venue: Kawatoyo betukan
113-1 Azumacho Narita-shi, Chiba 286-0025

Fee: No charge (Included in registration fees)

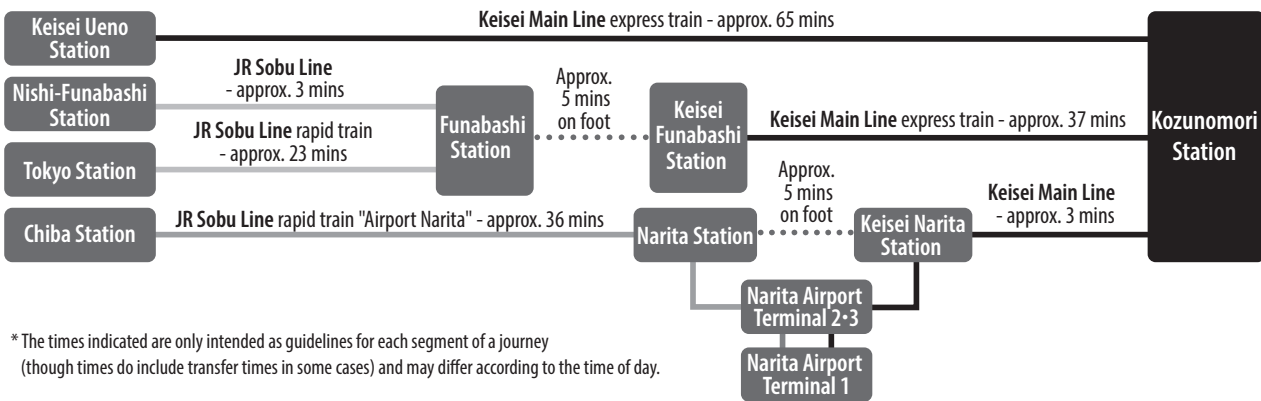
Access

International University of Health and Welfare Narita Campus

4-3 Kozunomori, Narita-shi, Chiba 286-8686, Japan



Time required from principal train stations

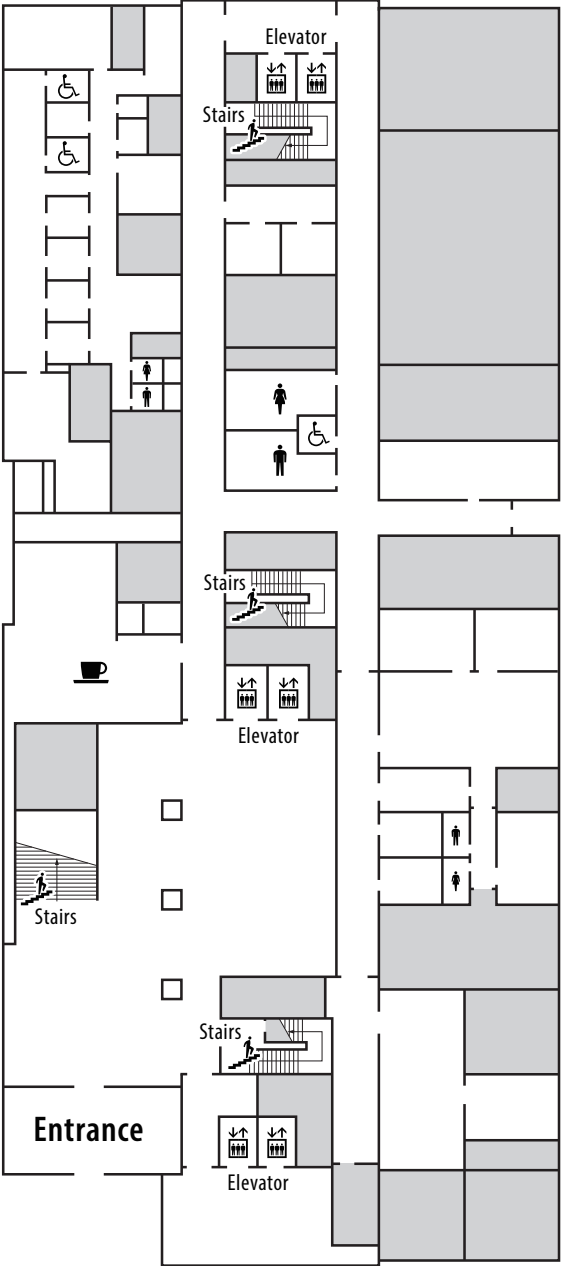


* The times indicated are only intended as guidelines for each segment of a journey (though times do include transfer times in some cases) and may differ according to the time of day.

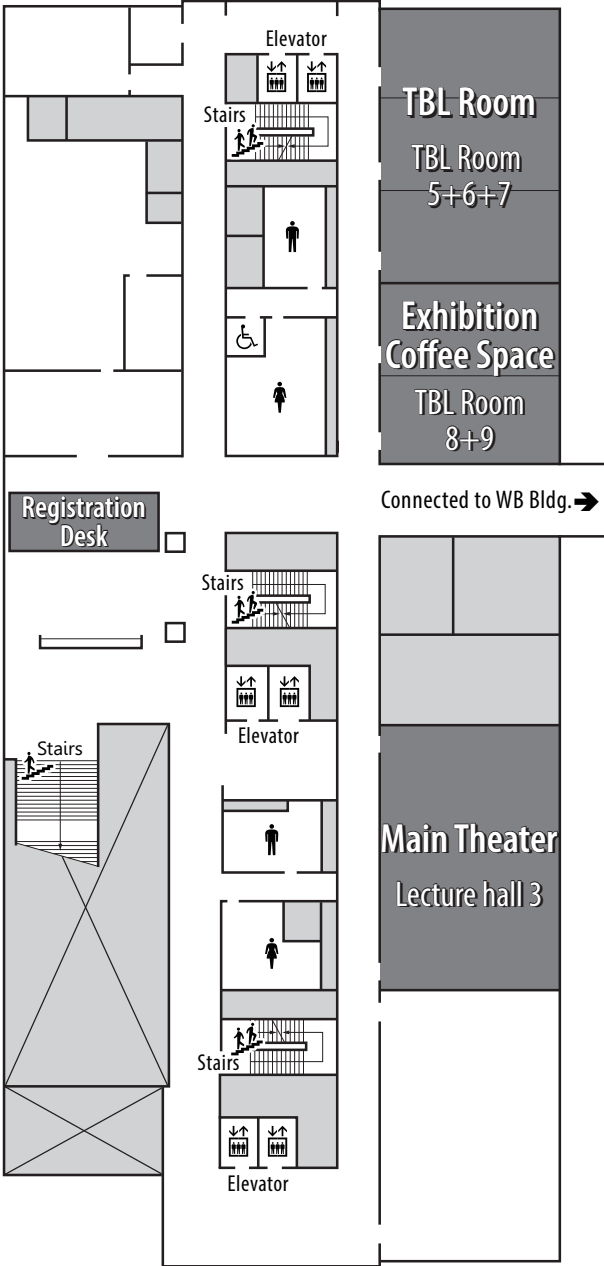
- Congress venue, Narita campus, International University of Health and Welfare locates just left next to the exit of Kozu-no-Mori station, Keisei main line, which is just 2-3 stations from the Narita International airport.
- There are free shuttle bus services provided many hotels around Narita international airport from/to the airport.

Venue Map

WA Bldg. 1F



WA Bldg. 2F



← To Kozunomori Station

How to become a Member of APWA -See www.apwa.asia

Persons wishing to become members of the Association must submit their application forms to the Secretary General, with valid practicing certificate and practicing address as the supporting documents. A valid application for Full Membership and International Membership must be supported by a nomination of **ONE proposer, who is a Full Member of the Association**. Applicants can write to the Secretary General to request for a nominator in case of need. **A valid application for Associate Membership does not require a proposer.**

Full Members: are surgeons practicing professionally in an Asia Pacific country or area, with special interest in wrist disorders. Full members must pay full membership fees, can participate in all scientific activities of the Association at membership rate, have the right to participate at the General Assembly and have the right to vote, and are eligible to be elected as member of the Executive Board, or of other sub-committees of the Association.

02. International Members: are surgeons practicing professionally outside the Asia Pacific region, with special interest in wrist disorders. International Members must pay full membership fees, can participate in all scientific activities of the Association at membership rate, and are eligible to be elected as member of the sub-committees of the Association. International Members have neither the right to vote at the General Assembly, nor can they be elected as a member of the Executive Board of the Association.

03. Associate Memberships: is available to a) other medical and allied health professionals, scientists and individuals, who are not surgeons but are interested in wrist disorders and are practicing relevant services or researches in relation to the care of wrist disorders; b) Surgeons under training who practice professionally in an Asia Pacific country or area, with special interest in wrist disorders. Associate members pay reduced membership fees, can participate in all scientific activities of the Association at membership rate, and are eligible to be elected as member of the sub-committees of the Association. Associate members have neither the right to vote at the General Assembly, nor can they be elected as a member of the Executive Board of the Association.

Annual Fee: Full and International members \$US100 / year, Associate members \$US50 / year

2018 APWA Traveling Fellowship

Aim of the Program:

To be an international collaboration that enhances training and exchange of knowledge and skills in wrist surgery.

Target Applicants:

Surgeons interested in wrist surgery and research and are willing to fulfill the program responsibilities.

Recruitment Criteria:

- Active FULL Member of APWA
- No age limitation but young surgeons are encouraged
- Practising surgeons in Orthopaedics, Plastic or Hand Surgeries
- Recommendation letters of 2 referees with at least ONE being Full Member of APWA

Responsibilities of Successful Applicants:

- Attend all the activities arranged by the supervisors of different centers
- Submit abstract and provide at least one oral presentation of their travelling experience in the annual APWA congress
- Submit a written report on the travelling experience

2018 APWA Travelling Fellowship Program:

The Fellows were hosted by Prof PC Ho in Hong Kong, Toshiyasu Nakamura and Keiji Fujio in Japan and Greg Bain in Adelaide. The Fellows also attend the 4th APWA Annual Congress.

Country	Training Period	Training Centre	Supervisor
Adelaide, Australia	24 - 26 Oct 2018	Flinders University	Gregory Ian BAIN
Hong Kong	29 Oct – 2 Nov, 2018	Prince of Wales Hospital – The Chinese University of Hong Kong	Pak-cheong HO
Tokyo, Japan	5 – 6 Nov, 2018	International University of Health and Welfare	Toshiyasu NAKAMURA
Osaka, Japan	7 – 9 Nov, 2018	Kansai Electric Power Hospital	Keiji FUJIO
Narita, Japan	10 – 11 Nov, 2018	4 th APWA Annual Congress	Toshiyasu NAKAMURA

Educational Grant:

We are most grateful for grant that we have received from Arthrex, to continue support the 2018 APWA Travelling Fellowship.

2019 APWA Travelling Fellowship:

Applications will be open for the 2019 APWA Travelling Fellowship in Mid-2019. Details please visit APWA official website at www.apwa.asia

Dr Wing-Lim Tse (Chairman, APWA Travelling Fellowship Committee)

2018 APWA Traveling Fellowship: Adelaide, Hong Kong, Tokyo, Osaka, Narita

Zhixin WANG (Beijing, China)

Ziyang ZHANG (Wuhan, China)

Lei ZHU (Jinan, China)